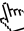
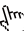
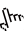
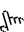
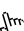




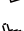



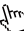
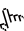
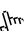





Wireless Flash Drive
User Manual

English

<u>Introduction</u>	 3 Page
<u>Download App</u>	 4 Page
<u>Connect the Device</u>	 5 Page
<u>Connect to the Internet</u>	 6 Page
<u>Change Wi-Fi Name and Set a Password</u>	 7 Page
<u>Internal and External Storage</u>	 8-9 Page
<u>Back up Pictures and Videos</u>	 10 Page
<u>Back up Contacts</u>	 11 Page
<u>Share Files</u>	 12 Page
<u>Store Files from Third-party Apps on iPhone</u>	 13-14 Page
<u>Compress and Decompress Files</u>	 15-16 Page
<u>Icon Definitions</u>	 17 Page
<u>Use and Manage the Pictures Category</u>	 18 Page
<u>Use and Manage the Music and Movies Category</u>	 19 Page
<u>Use and Manage the Documents Category</u>	 20 Page
<u>Use and Manage the All Files Category</u>	 21 Page
<u>Clear Cache</u>	 22 Page
<u>Upgrade Firmware</u>	 22 Page
<u>Restore Factory Settings</u>	 23 Page

Thank you for purchasing MiLi wireless flash drive!

Product Features

- Connect with your phone via Wi-Fi; comes with a user-friendly dedicated App; one click to back up your photos/videos; manage your files in the flash drive and free up storage space on your phone.
- Password protection: password required to access the flash drive to ensure the safety of your files.
- Support file compression/decompression and allow direct editing of txt files, making your mobile office easy as ever.
- Support multi-user Wi-Fi connection, which allows multiple users to share the files on the flash drive at the same time, making it more convenient for the users.

Compatible With

- iPhone, iPad, iPod touch running iOS 8 or above
- Android phones running Android 4.3+
- Windows/Mac OS, using USB

Download App

The free iData Air App is required for the access, management and organization of all stored files on the device.

For iPhones, please scan the QR code below, or search for “iData Air” in App Store to download it directly.

For Android phones, you may also scan the QR code below, or search for “iData Air” in Google Play to download it directly.

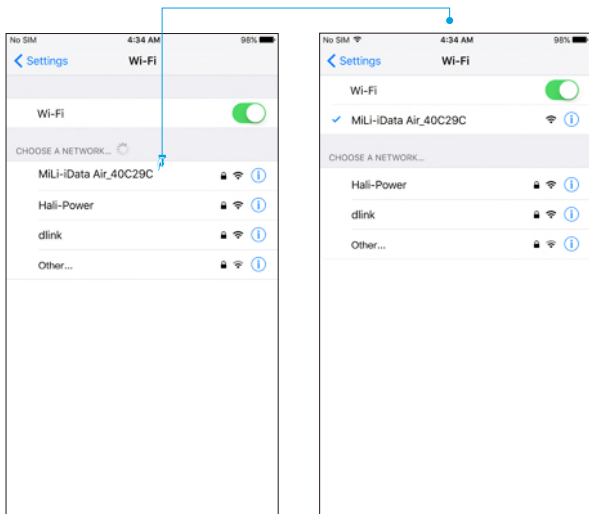


iData Air



Connect the Device

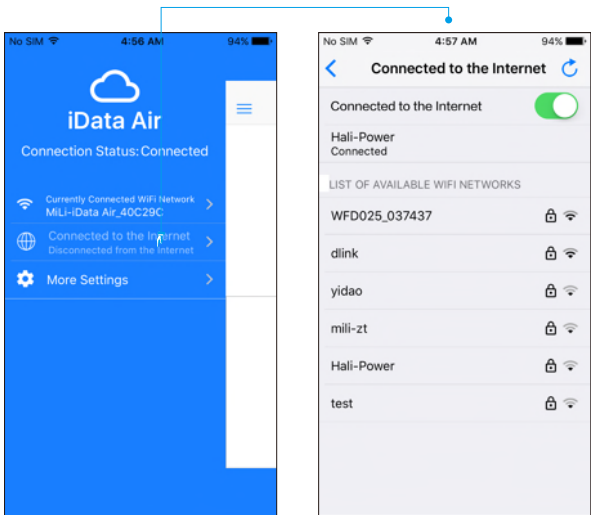
Press and hold the button for 3 seconds to turn on iData Air; open the phone settings, switch on the Wi-Fi, search for “MiLi iData Air_xxx” and enter the connection password (no password by default and you can set the password on the App). Upon successful Wi-Fi connection, the indicator lights will flash a few times. Open iData Air App and you are ready to go.



Connect to the Internet

Click and enter “Connect to the Internet” , select your “Wi-Fi Network” , enter the password of the “Wi-Fi Network” and click “Join” to connect to the Internet. When using the device through your Wi-Fi network, the transfer speed will depend on your Wi-Fi network condition, which may not as fast as directly connect to the wireless flash drive.

Note: Upon successful connection to the Internet, the device will automatically reboot. After the reboot, you have to re-connect the device for use. Which may not as fast as directly connecting to the wireless flash drive.



Change Wi-Fi Name and Set a Password

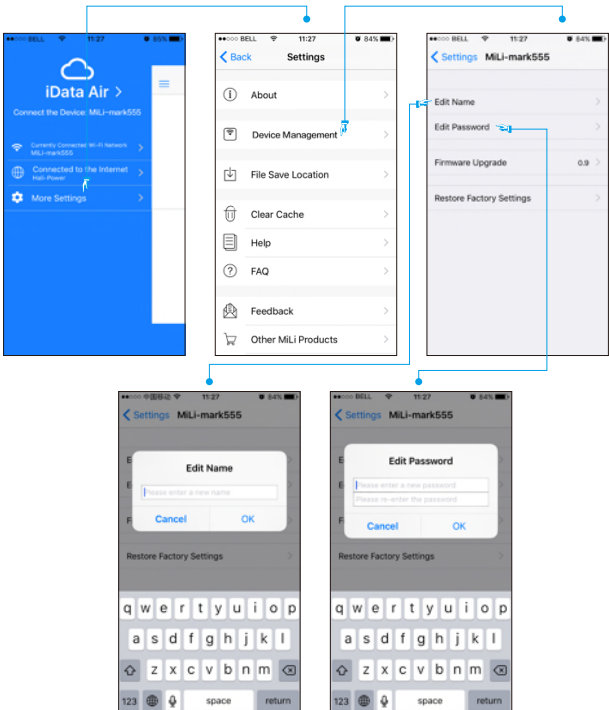
To change Wi-Fi name:

Enter “Settings” , click “Device Management” and you will see the option “Change Name” . By clicking on it, you can change the name.

To set a password:

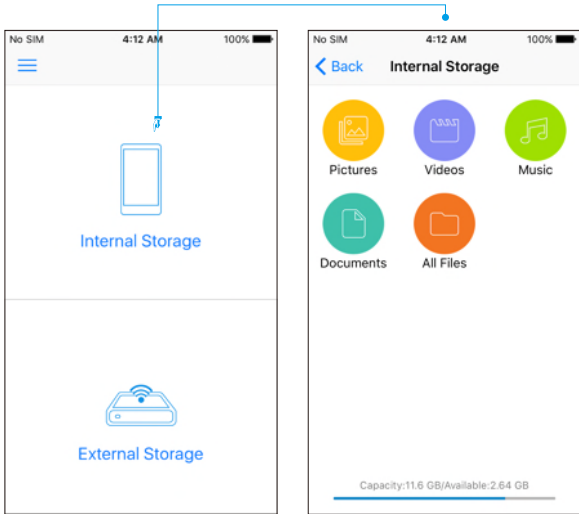
There is no default password on wireless flash drive. If you need to set a password, go to “Device Management” and click “Change Password” . If you haven't set a password before, the password entered here will be your first password, otherwise the password entered here will replace your old password.

Note: The “MiLi” prefix will be added to the changed “Wi-Fi name” automatically, i.e. MiLi-(your changed name). After changing the Wi-Fi name or password, you need to re-connect wireless flash drive.



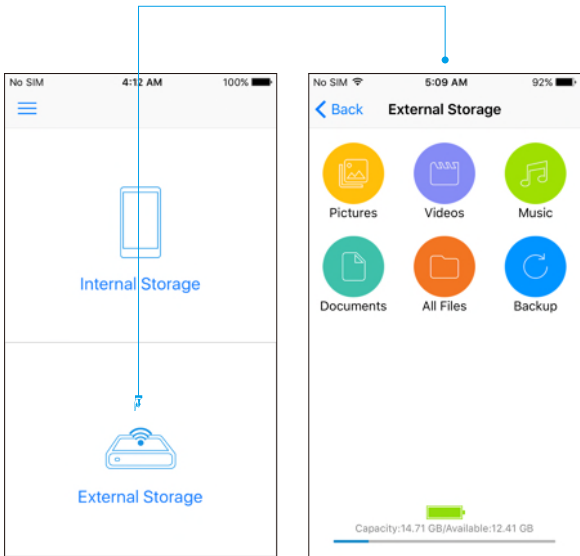
Internal and External Storage

Connect wireless flash drive via Wi-Fi, tap to enter the App, and you can see two sections, Internal Storage and External Storage.



Internal Storage:

Internal Storage is an independent storage space partitioned from the phone storage. It occupies the internal storage on the phone itself. Simply put, Internal Storage is an empty folder created on the phone, so no files can be found when we open Internal Storage. Internal Storage is divided into 5 sections: pictures, music, movies, documents and all files. As Internal Storage shares the phone storage, you can still access it when your phone is not connected to wireless flash drive.

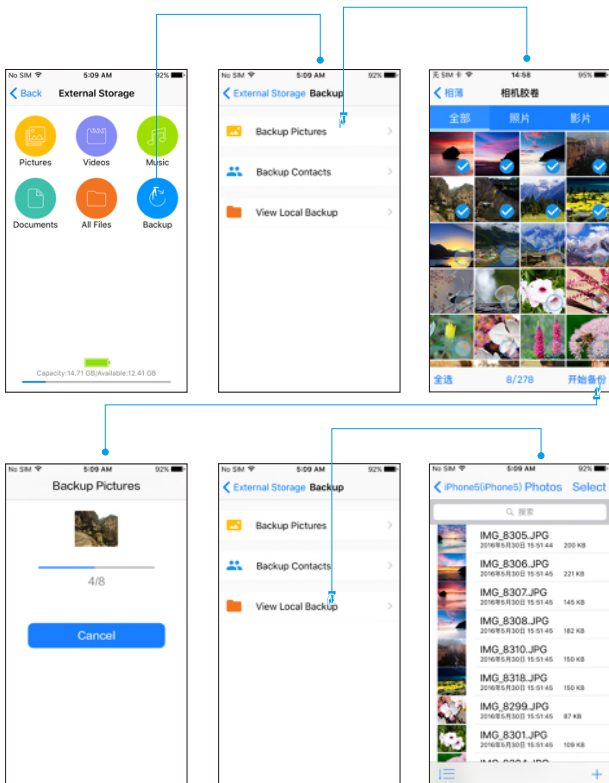


External Storage:

External Storage refers to the internal storage on wireless flash drive itself, which can be accessed only when the phone is connected to wireless flash drive. You can back up the pictures and videos on your phone to wireless flash drive; as well as store movies, documents, images and other files downloaded from the computer.

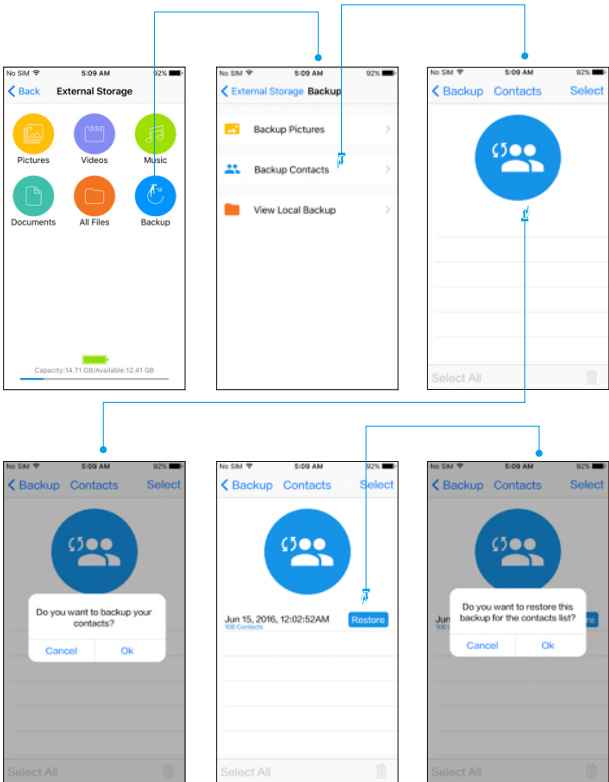
Back up Pictures and Videos

Tap the “Backup” button and enter the “Backup” page. Select “Backup Photos” and the App will jump to the photo gallery. Then you can select “One-click Backup” to back up all your pictures and videos in one click, or just select the picture or video you need to back up; tap “View Local Backup” on the “Backup” page to view all backup files on wireless flash drive.



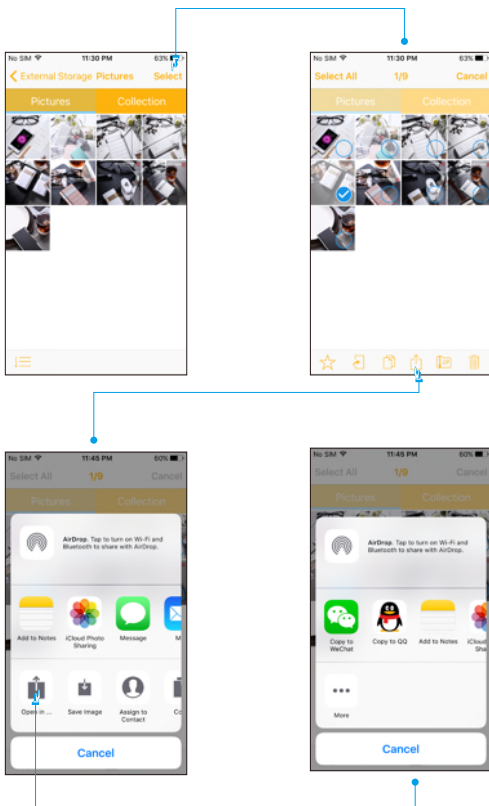
Back up Contacts

Tap the “Backup” button and enter the “Backup” page. Select “Backup Contacts” to enter the “Contacts” page. Tap the “Backup” button and a prompt asking “Do you want to backup the contacts?” will pop up. Click OK to start the backup; tap the “Restore” button on the right of the backup contacts file, and a prompt asking “Do you want to restore the backup to Contacts?” will pop up. Click OK to back up the contacts to iPhone; you can delete a file either by clicking “Select” or sliding the file to the left; tap “View Local Backup” to view all backup contacts files.



Share Files

Open or select the file/image to be shared and click the “Share” button. Locate the “Open in” button on the pop-up window and click on it. A list of third-party apps installed on your phone will appear on the window. Select the App that you want to share the file/image on. (For Android phones, simply tap the “share” button and select the App that you want to share on) The screenshots below show how to share an image on iPhone, for example.

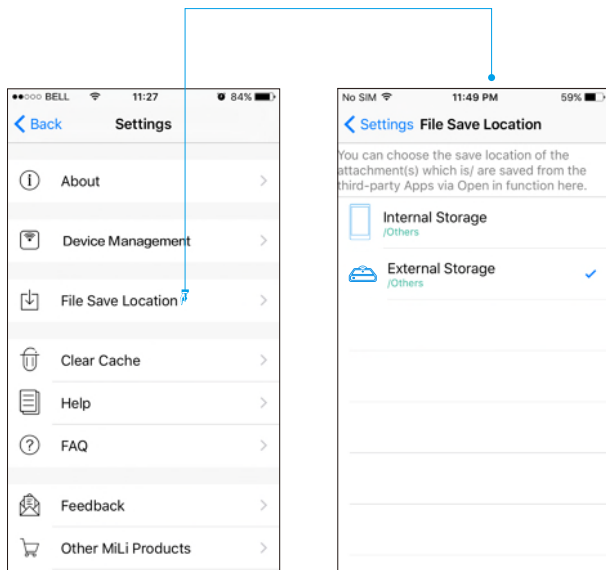


Store Files from Third-party Apps on iPhone

1. Select the location to save the files

Open the App settings, click and enter “File Save Location” . Select “Internal Storage/Other Documents” or “External Storage/Other Documents” as the save location. Any files from third-party App will be stored to your selected save location.

Note: This function only supports iOS devices. Android devices are currently not supported.

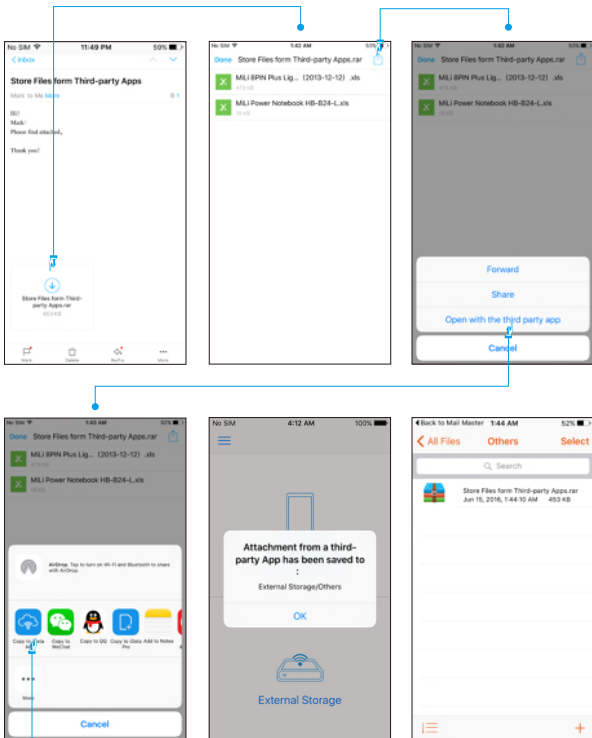


Store Files from Third-party Apps on iPhone

2. Save the files

To save an email attachment, for example:

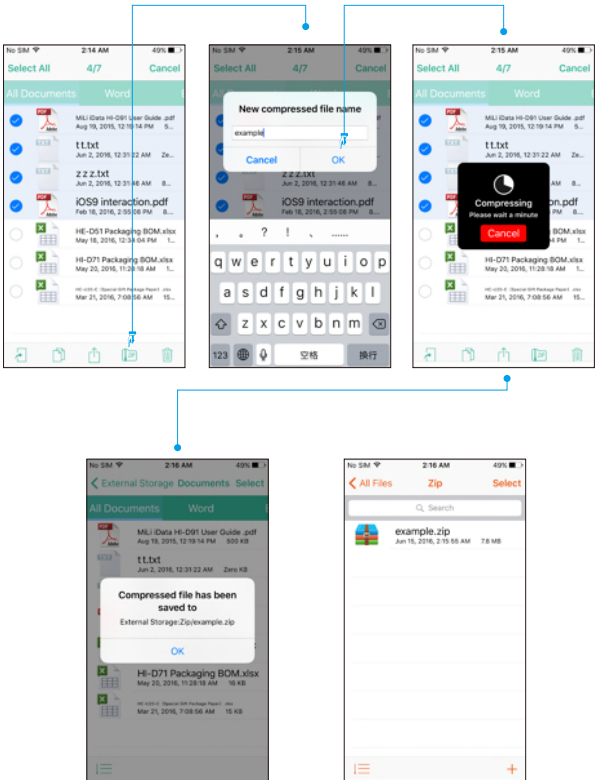
Download and open the attachment, click the “Share” button and select “Open in other apps” on the pop-up window. A list of apps that support this function on iPhone will appear on the window. Select “Open in iData Air App” and a reminder message will pop up saying “The file has been saved from the third-party app into your selected file save location”, where you can view and edit the file.



Compress and Decompress Files

To compress a file:

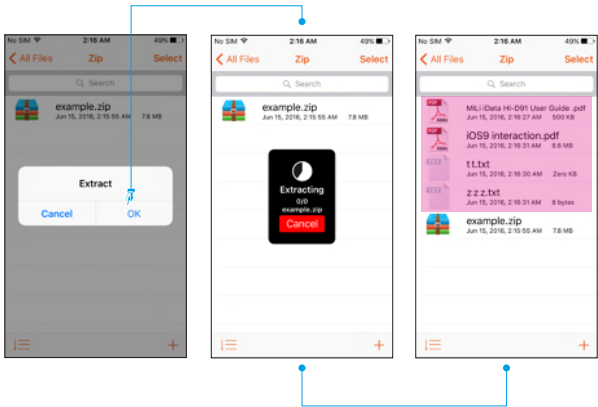
Select the file to be compressed, click the “Compress” icon, and a dialog will pop up asking for a filename for the new compressed file. Click OK to start the process. The amount of time it takes is proportional to the size of the compressed file. Once completed, a reminder box will pop up showing “The compressed file has been saved into the “Compressed Files” folder” . You can open the compressed file in the “Compressed Files” folder under “All Files” .



To decompress a file:

Click on the file to be decompressed, and click OK to confirm on the pop-up window. It will start to decompress the file. The amount of time it takes is proportional to the size of the compressed file. Once completed, all files in the compressed file will be shown in the folder where the compressed file is located.

Note: Only Zip format is currently supported. RAR format is not supported.



Icon Definitions



File order



Create a new folder/document



Add to favourites



Share a file



Move a file



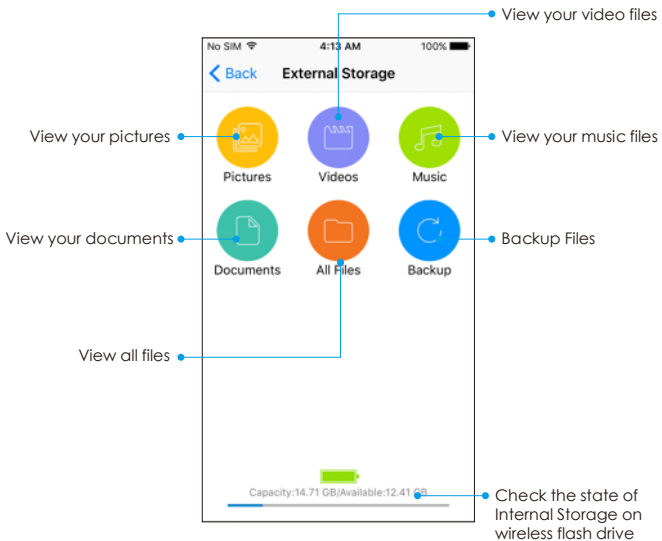
Compress a file



Copy a file

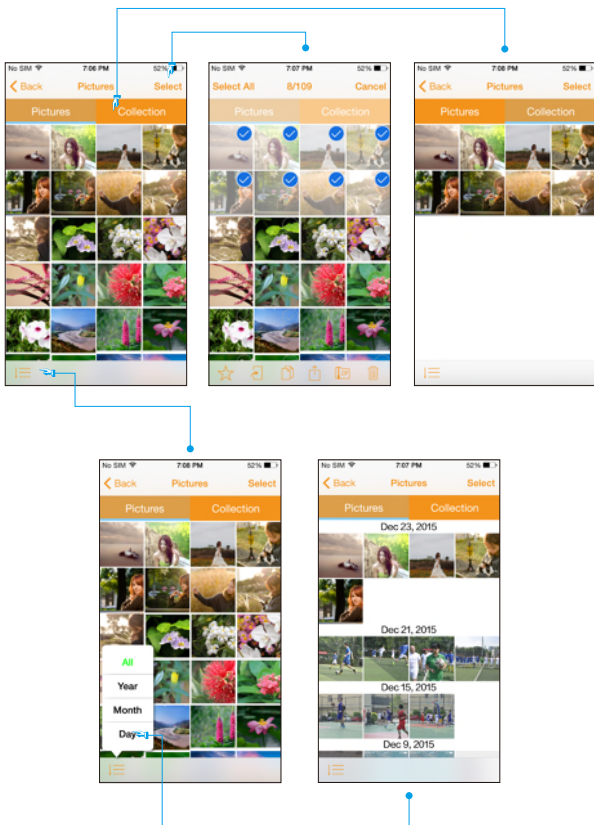


Delete a file



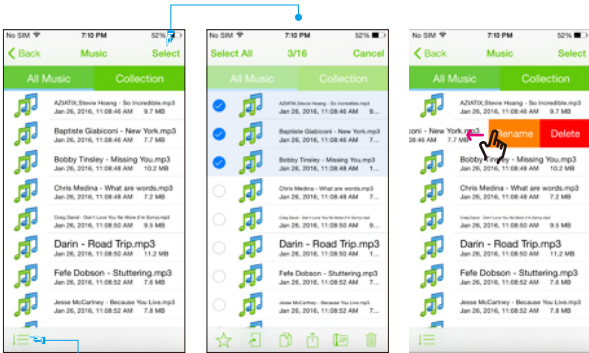
Use and Manage the Pictures Category

Click on the “Pictures” icon and you can view all image files stored on wireless flash drive. On the Pictures page, click “Select” on the top right to select the photo that you need to move, copy, share, compress, delete or add to favourites. Click “Favourites” to view the photos that have been added to favourites. Click the “File order” icon on the bottom left to change the display order of the pictures; view all or sort by date.



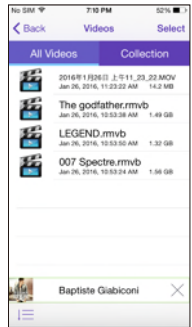
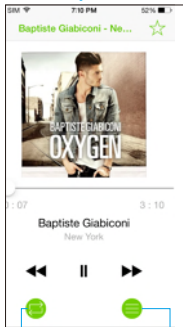
Use and Manage the Music and Movies Category

Open the “Music” category and you can view all music files stored on wireless flash drive; on the Music page, click the “Select” button on the top right to select the music file that you need to move, copy, share, compress, delete or add to favourites; click “Favourites” to view the music files that have been added to favourites; click the “File order” icon to change the display order of the music files by file type, file size, filename and date created; you can delete or rename a music file by sliding it to the left; while playing music, you can re-arrange the “Play order” or view the “Playlist” . The same goes for video files.



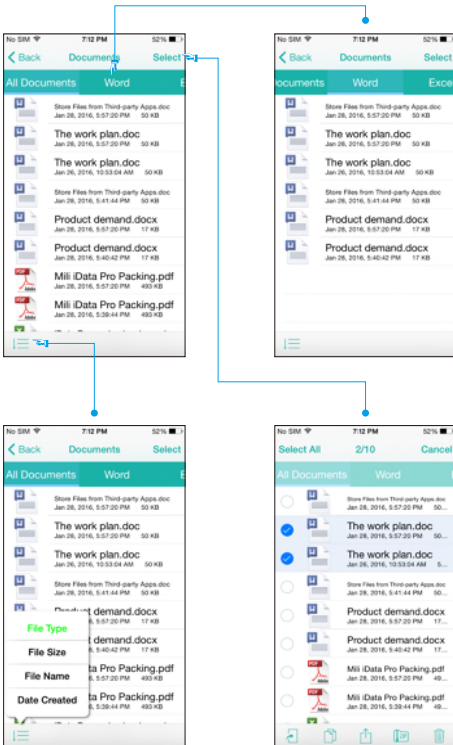
Play music

View video files



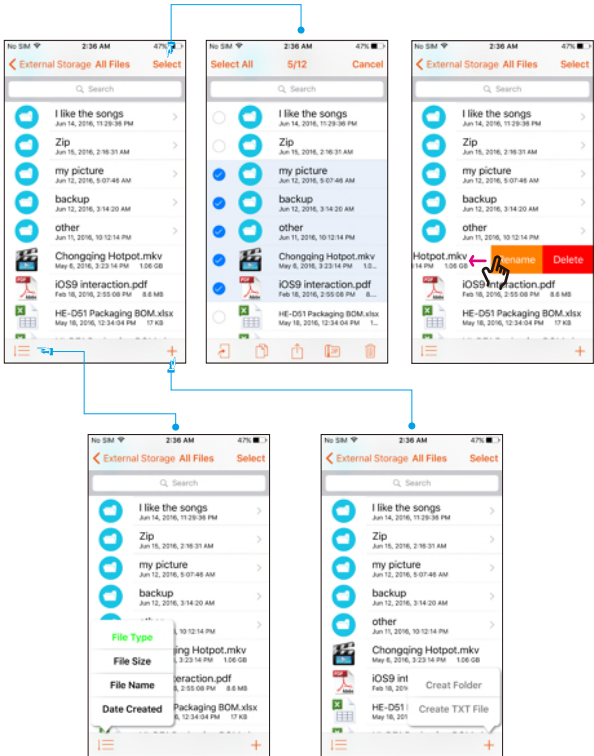
Use and Manage the Documents Category

Click on the “Documents” icon and you can view all documents stored on wireless flash drive. It supports document formats like: Word, Excel, PPT, PDF, TXT, Pages, Number, Key. You can view different formats of documents by clicking on the document formats listed on the top; click the “Select” button on the top right to select the document that you need to move, copy, share, compress, delete or add to favourites. Click “Favourites” to view the documents that has been added to favourites. Click the “File order” icon to change the display order of the documents by file type, file size, filename and date created; you can delete or rename a document by sliding it to the left.



Use and Manage the All Files Category

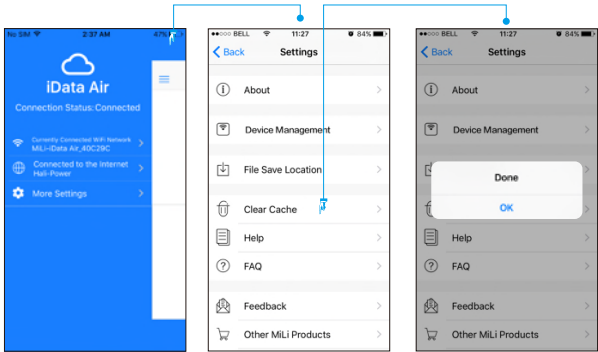
Click on the “All Files” icon and you can view all files stored on wireless flash drive. Click the “Select” button on the top right to select the file that you need to move, copy, share, compress or delete; click the “File order” icon on the bottom left to change the display order of the files by file type, file size, filename and date created; you can delete or rename a file/folder by sliding it to the left; click the “Create” button to create a new folder/document.



Clear Cache

The system will automatically create cache files when used. In order not to affect your normal use, please clear cache regularly; On the Settings page, click “Clear cache” and this will complete the process.

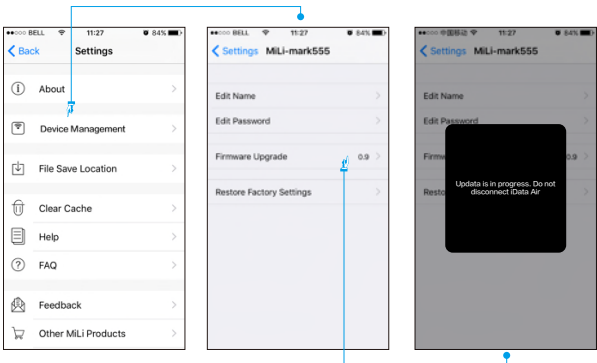
Note: After clearing the cache, photo thumbnails will be reloaded.



Upgrade Firmware

For better user experience, the firmware updates at irregular intervals; on the Settings page, click “About” to enter the About page, where you can see “Firmware version” . It will be marked with a red text message when there is a new firmware version available. Click on it and you can upgrade the firmware.

Note: When updating the firmware, please make sure wireless flash drive has enough battery. During the process, do not perform any other tasks until the upgrade is complete.



Restore Factory Settings

1. Restore Factory Settings Via App

Open “Settings” and click to enter “Device Management” . By clicking “Restore Factory Settings” , the device will be restored to factory settings.

Note: Restoring factory settings will reset the name and password of wireless flash drive. After factory reset, you need to re-connect wireless flash drive.

